

Where plans come together.



40H MORTISE LOCK



40H MORTISE LOCK



Performance You Can Plan On.

Taking a facility from architectural blueprint to completed project can be a complicated process. Decisions have to be made, deadlines have to be met, and rarely does anything go exactly according to plan. But at least there's a simple solution when it comes to the protection of your facility...the 40H Mortise Lock from Best Access Systems. With its advanced features, improved functionality and unique versatility, the 40H Mortise Lock not only provides reliable performance after installation, but incredible flexibility before it's installed. And that's something you can plan on.

Plans can change. So can the 40H Mortise Lock.

No matter how well you plan, mistakes can happen. Whether it's an error in a site survey, an oversight in a construction schedule take-off, or simply a change in the building design and requirements, any change can be costly and time-consuming. But with the 40H Mortise Lock you can postpone critical decisions on the final lock configuration all the way up to the point of installation. That's because the universal case design of the 40H Mortise Lock allows you to not only change the handing of the lock on-site, but reconfigure it to a variety of functions at the same time. And you can do so without ever opening the lock case. So no matter how your plans change, the 40H Mortise Lock can change right along with you.

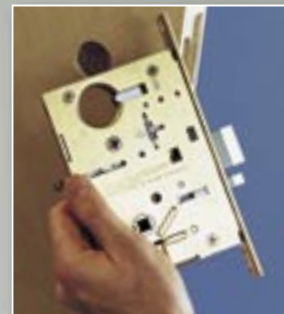
► Easy, On-Sight Handing Change



Insert flat blade screwdriver into latch access point and press to extend latch out of case.



Without opening lock case, rotate latchbolt 180 degrees and allow it to retract back into case.



Latchbolt is now rotated to match door handing.

CYLINDER RETAINER ►

The non-handed cylinder retainer offers the ability to change the lock's handing without opening the case. Clamping down on both sides of the case, the assembly eliminates the need to reposition parts during handing changes.



HUB TOGGLE ►

With our advanced hub toggle design, changing the handing of the 40H Mortise Lock has never been easier. The positions of the hub toggle determine whether the hub is always locked, always unlocked or locked by key.



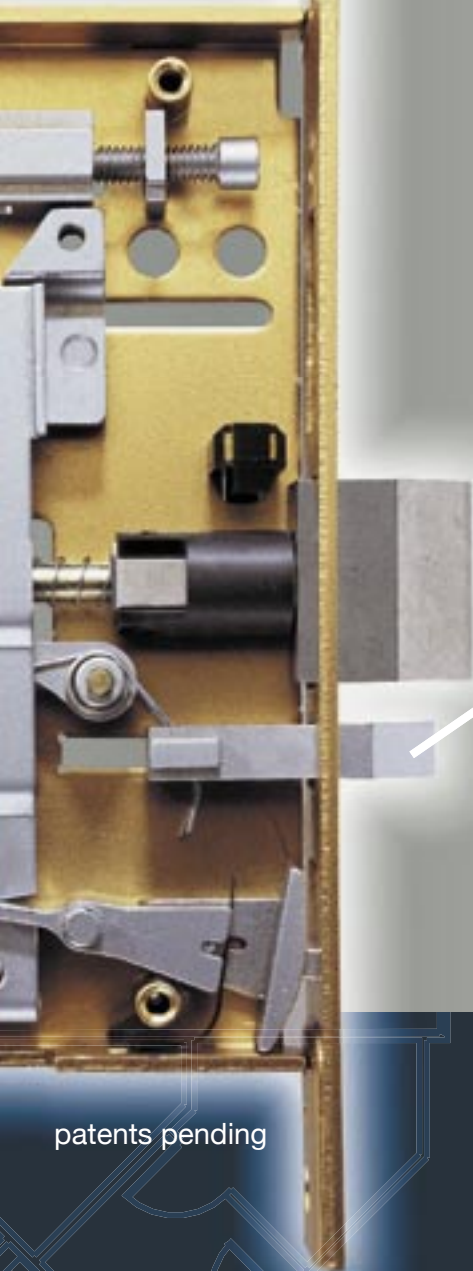
40H MORTISE



Strength, Durability, Flexibility. It's all part of the plan.

The 40H Mortise Lock follows a long line of durable, dependable products from Best Access Systems. With the popular 30H as its predecessor, the 40H Mortise Lock retains the same solid construction and reliable features, but comes with upgraded functionality and far more versatility. All the while, the 40H Mortise Lock remains a low maintenance product that is easy to reconfigure and easy to install. It's what happens when a plan comes together.

MORTISE LOCK



patents pending



◀ UNIVERSAL STRIKE

With its specially designed strike box, the 40H Mortise Lock has the ability to provide a non-handed strike, as well as retain the more aesthetic curved lip design. So now, you don't have to choose between one or the other.



◀ AUXILIARY LATCHBOLT

The 40H Mortise Lock is about making handing changes easier. This includes the symmetrical design of the stainless steel auxiliary latch, which eliminates the need to rotate the bolt during re-configuration.

ONE-PIECE LATCH ▶

Making something better doesn't have to mean making it more complicated. Stanley-BEST has developed a one-piece latch assembly to replace the traditional two-piece design. This solid, anti-friction, stainless steel latch offers 50% more surface contact with the strike for superior strength and security.



We've got plans for you.

Ordering Methods

The 40H Mortise Lock is the most efficient and flexible product on the market. And that includes the way you order it. Best Access Systems has three basic methods from which you can select the 40H Mortise Lock:

► Function Specific Lock

Sometimes, plans don't change. If you know exactly what you need, you can order your 40H Mortise Locks in the traditional way of specifying the exact function, trim finish and handing. Stanley-BEST will then build the locks to work precisely as you've specified, though these locks may or may not have the ability to be converted to another function in the future.

► Universal Lock

Perhaps you'd like to keep your options open. For this reason, Stanley-BEST has developed three "universal" functions that can be configured to a variety of common features – all without opening the lock case. And when any of the universal functions are ordered as a complete lock, all necessary parts are provided to configure any of the functions in that group.

UNR Function	ANSI#	UNT Function	ANSI#	UNAB Function	ANSI#
A - Office	F04	L - Privacy	F19	AB - Office	F20
AT - Office	F04	T - Dormitory	F13	TA - Dormitory	F12
D - Storeroom	F07			TD - Dormitory	
LT - Privacy	F22				
N - Passage	F01				
NX - Exit	F31				
R - Classroom	F05				

► Three-Part Lock

For maximum flexibility, Stanley-BEST provides a way for you to order the 40H Mortise Lock in three parts: Inside Trim, Case Only and Outside Trim. The kits that make up these three parts have been designed so that, when combined, you have everything that makes up a complete 40H Mortise Lock.



The three-part lock ordering method is ideal for stocking a variety of trim designs with a minimal number of lock cases. ▼





40H MORTISE LOCK

Trims & Finishes

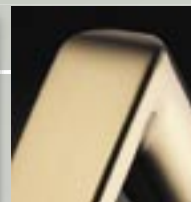
The 40H Mortise Lock is available in a variety of attractive finishes and trim variations including the following:



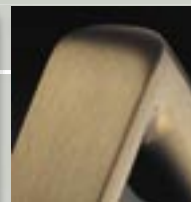
605
Bright Brass
Clear Coated



606
Satin Brass
Clear Coated



611
Bright Bronze
Clear Coated



612
Satin Bronze
Clear Coated



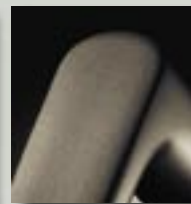
613
Oxidized Satin
Bronze, Oil Rubbed



625
Bright Chromium
Plated



626
Satin Chromium
Plated



690
Dark Bronze
Powder Coated



14 - Lever
J - Escutcheon



15 - Lever
M - Escutcheon



3 - Lever
H - Rose



16 - Lever
R - Rose



4 - Knob
S - Rose

Locksets and Latchsets:

- [Best Access Systems.] - [_____] [_____]
1. Base Specification: Best Access Systems components as listed in Hardware Schedule per Article 3.05.
 2. Locksets and latchsets of other acceptable manufacturers must conform to the requirements of Subparagraphs 3 and 4.
 3. Mortise Type:
 - a. Locksets shall be tested and approved by BHMA for ANSI A156.13, Series 1000, Operational Grade 1, Extra-Heavy Duty, Security Grade 2 and be UL10C
 - b. Locksets shall be mortise type with solid 3/4 inch throw one-piece radiused latchbolt made of self-lubricating stainless steel. Deadbolt functions shall be one inch projection stainless steel construction. Both deadbolt and latchbolt to extend into lock case with reinforcing a minimum of 3/8 inch when fully extended.
 - c. Knobs to be [_____] design.
Levers to be [_____] design.
 - d. Furnish locksets and latchsets with sufficient strike lip to protect door trim.
 - e. Provide locksets with 7 pin [Stanley-BEST] interchangeable core cylinders. [All mortise cylinders shall have a concealed internal set-screw for securing the cylinder to the lockset. The internal set-screw will be accessible only by removing the core from the cylinder body with a control key]
 - f. All mortise locksets and latchsets must conform to ANSI A156.13, Series 1000, Operational Grade 1 [Security Grade 2 for locksets in security areas] and be listed by UL. [High Security Option: All mortise locksets must conform to ANSI A156.13, Series 1000, Operational Grade 1, Security Grade 1 and listed by UL, and must include interchangeable core cylinders which conform to High Security Cylinder requirements of UL 437.]
 - g. Locksets must fit ANSI A115.1 door preparation.
 - h. Locksets and latchsets to have self-aligning through-bolted trim.
 - i. Locksets and latchsets must have the ability to change handing without opening case.
 - j. Auxiliary latch to be made of one-piece self-lubricating stainless steel.
 - k. Locksets must be available with tactile or knurled knobs or levers for identification of hazardous areas.
 - l. Lever handles must be of forged or cast brass, bronze or stainless steel construction and conform to ANSI

A117.1. Levers which contain a hollow cavity are not acceptable.

Subparagraphs m through r describe quality features of Stanley-BEST mortise locksets which may or may not be available from other lock manufacturers. Edit accordingly.

- m. [Spindle to be such that if forced it will twist first, then break, thus preventing forced entry.]
- n. [Knobs and levers to be operated with a roller bearing spindle hub mechanism.]
- o. [Permanent core face must be the same finish as the lockset finish.]
- p. [Cylinder retaining screw, auxiliary latch, and strike must be non-handed.]
- q. [Locking toggle on face of door must clearly indicate whether mortise lock is in the "locked" or "unlocked" state.]
- r. [Cover and armored front must interlock at the latch, preventing the cover from spreading or bowing while under duress.]

Subparagraphs s through x describe quality features of Stanley-BEST mortise locksets which may or may not be available from other lock manufacturers. Subparagraphs s, t, and u should remain as a group, and subparagraphs v, w, and x should remain as a group. Choose either s-u or v-x, but not both groups.

- s. [Mortise lock to offer a complete lock (including trim) with the ability to be configured in the field to any of the following ANSI functions: F01, F04, F05, F07, F31.]
- t. [Mortise lock to offer a complete lock (including trim) with the ability to be configured in the field to any of the following ANSI functions: F19, F13]
- u. [Mortise lock to offer a complete lock (including trim) with the ability to be configured in the field to any of the following ANSI functions: F12, F20]
- v. [Mortise lock to offer a multi-function case with the ability to be configured in the field to any of the following ANSI functions: F01, F04, F05, F07, F09, F22, F30, F31, F32.]
- w. [Mortise lock to offer a multi-function case with the ability to be configured in the field to any of the following ANSI functions: F13, F19, F33.]
- x. [Mortise lock to offer a multi-function case with the ability to be configured in the field to any of the following ANSI functions: F12, F15, F20]



For more information, please contact your local Best Access Systems sales office.

6161 EAST 75TH STREET | INDIANAPOLIS, IN 46250 | 317-849-2250

A Division of



Security Solutions