



SL-DOG®

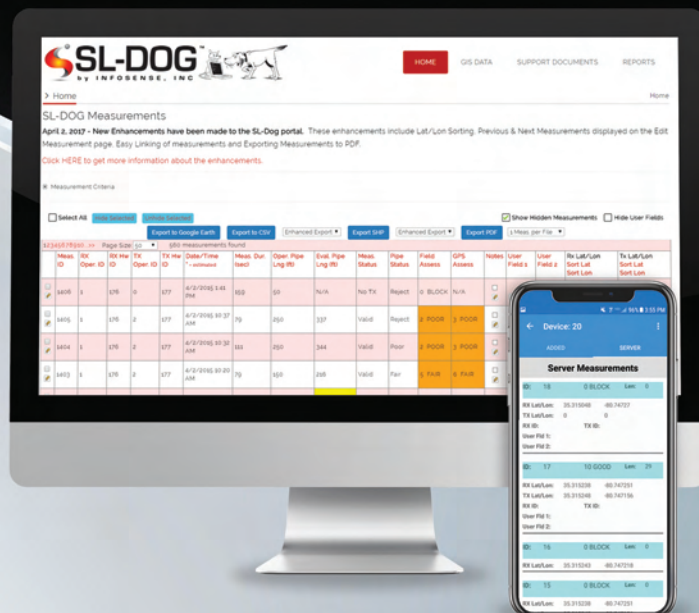
www.sl-dog.com

Sewer Line Data Organizer

SL-DOG is a secure, cloud-based web portal that complements the SL-RAT®. Simply upload your acoustic inspection data on a regular basis to have access to many valuable features such as productivity tracking or integration with asset management workflows.

You've collected SL-RAT inspection data for thousands of feet of sewer pipe...Now what?

Utilize the SL-DOG to view, edit, validate, export and store the valuable data collected from your investment in the Sewer Line Rapid Assessment Tool, or SL-RAT.



"We've found the SL-DOG is worth using, especially for keeping track of our crews' time and activity."

- Collections Superintendent, Florida

Manage The Team



Validate & edit operator data

Ensure accuracy of acoustic readings and determine if there are operator errors or training needs. Review crew productivity & make sure tests are performed correctly.

Enhance The Data



Add meaningful notes and tag asset IDs

Add notes from the field or tag measurements with asset IDs to augment your acoustic data. While conducting acoustic tests, operators may add notes in real-time with the SL-DOG app.

Manage The Process



Integrate acoustic data with your management systems

Export data to Excel (CSV), ArcGIS (SHP), Google Earth (KML) or PDF to connect SL-RAT data to your sewer management systems or to create visually engaging & actionable reports.

Insure Your Investment



Archive data in a secure cloud environment

As your acoustic program grows and matures, continued access to historical data will help improve your asset management programs and allow for more refined decision-making.

InfoSense, Inc. • 2102 Cambridge Beltway Drive • Suite D-1 • Charlotte, NC 28273, USA
Sales: 877-747-3245 • Fax: 704-930-0145 • Email: sales@infosense.com • www.infosense.com

US Patent #8220484 • Portions of this product produced under license from the University of North Carolina at Charlotte • Version: 10-31-19

Minimum System Requirements to Download

Microsoft operating system required for downloading data

Prerequisites: .net Framework 3.5, 4.0

Hardware Driver: FTDI USB to Serial Driver

Operating System: Windows 7 (32 bit or 64 bit)

Internet Access to www.sl-dog.com

Available USB port to connect SL-RAT device

SL-DOG App: iOS or Android Smart Device

To learn more, please contact:

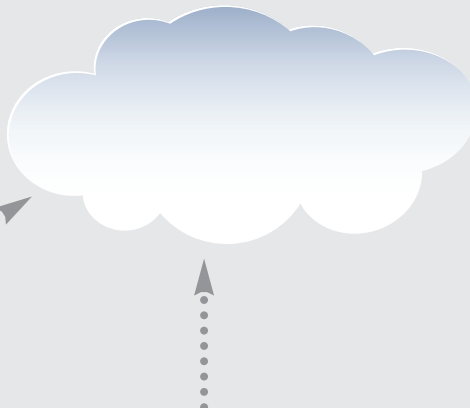


Steps to Use Your SL-DOG Portal

Step 2 (Optional)

Use the app in the field to input manhole data

Download the SL-DOG iOS or Android app on your phone to add asset data as you collect acoustic scores in the field.



Step 1*

Collect acoustic data in the field using the SL-RAT®

Follow SL-RAT Operator's Manual to conduct acoustic assessments.

Step 3

Transfer SL-RAT data to your computer

Use provided USB drive to plug your SL-RAT device to your PC and transfer the raw data from the SL-RAT to your portal.

Step 4

Use a PC to view, validate & edit acoustic data

Log into your secure web portal and access all of your acoustic data from a local client. Any changes you make are automatically pushed to a cloud-based database and archived for future access.

Step 5

Download acoustic data for application

Integrate acoustic data with your management systems by exporting acoustic data to industry standard programs such as Microsoft Excel (CSV), ArcGIS (SHP), Google Earth (KML) or Adobe PDF.

*The protocol for integrating the Sewer Line Data OrGanizer, or SL-DOG® is further documented in the ASTM Standard F3220 - 17: Standard Practice for Prioritizing Sewer Pipe Cleaning Operations by Using Transmissive Acoustic Inspection