



# KP-STUBBY COMPACTORS



## Big Jobs, Small Spaces

When space is limited, K-PAC Stubby Compactors have a compact design while still packing a powerful punch. The K-PAC Stubby produces high compaction rates equal to larger footprint compactors. Available in two sizes, the dual cylinder design and compact size of the Stubby Compactor takes up to 35% less space than other compactors of similar capacity. The short footprint of these machines make them ideal for dock and chute feed applications and can eliminate the need for costly walk-on and drive-on decks. Add to this the fact that you can eliminate the safety hazard of needing employees to walk on top of a machine.

### 3-2-1 WARRANTY

**3 Years Structure**

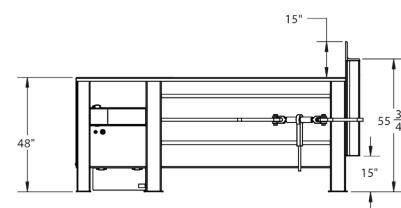
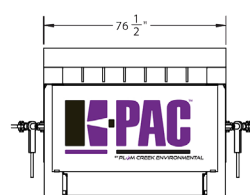
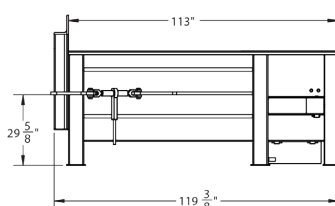
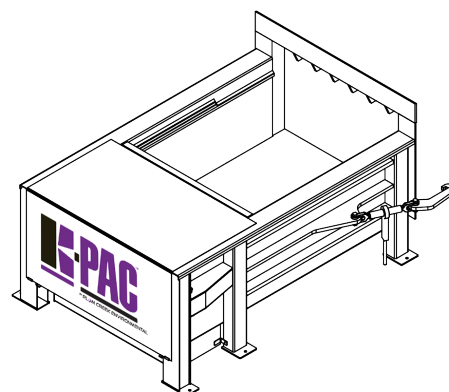
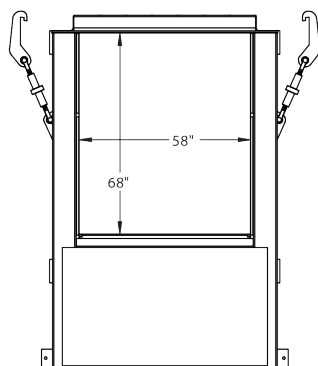
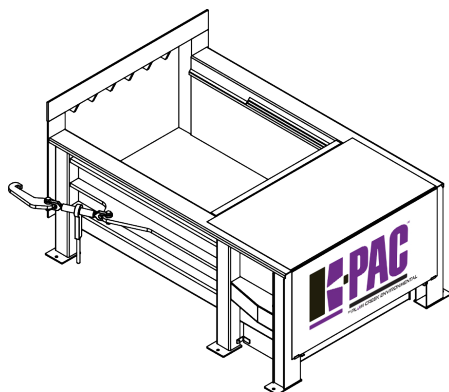
**2 Years Parts**

**1 Year Labor**



# K-PAC STUBBY

K-PAC STUBBY MODELS	KP-2STUB (2 YD)	KP-3STUB (3YD)
Basic Size (yd3)	1.44	2.22
A - Length (in)	72	119.375
B - Deck Height (in)	48	48
C - Width (in)	72 1/2	76 1/2
D - Clear Top Length (in)	40	68
E - Clear Top Width (in)	58	58
Ram Penetration (in)	13	13
Normal Force (lbs)	49,600	49,600
Normal Pressure (psi)	1800	1800
Maximum Force (lbs)	55,200	55,200
Maximum Pressure (psi)	2000	2000
Ram Face Width (in)	60	60
Ram Face Height (in)	28	25.4375
Cycle Time (sec)	43	66
Motor (hp)	10	10
Pump (gpm)	12	12
Cylinder Bore (in)	4 1/2	4 1/2
Cylinder Size Rod (in)	2 1/2	2 1/2
Cylinder Stroke (in)	37	56.5



by PLUM CREEK

1302 East Industrial Access Rd West Point, MS 39773 | 662-327-4183 | plumcreeket.com