



Lakeland Turnout Gear

2024 Price List and Order Form



The Quick-SHIP Program from Lakeland!

- USA Customers Only
- Custom gear delivered in 28 days (ARO)
- Free 2-Day Delivery
- 20% Upcharge
- 20 Set Maximum

Turnout Coat Price List

Coat Outer Shells					
Code	Material	A10 (AT32)	B1 (BA32)	B2 (BP32)	Stealth (ST32)
02	Nomex® 7.5oz	748.83	770.05	950.50	1,003.58
07	Pioneer 6.6oz	887.79	893.57	1,012.26	1,140.60
08	Agility 6.6oz		918.67	1,237.11	1,350.98
20G	Flex 7 Gold 6.9oz		1,206.22	1,377.99	1,486.08
20B	Flex 7 Black 6.9oz		1,206.22	1,377.99	1,486.08
04	Armor AP 6.5oz		895.50	1,015.16	1,161.84
23G	Pbi MAX Gold 7oz		1,204.30	1,374.14	1,482.21
23B	Pbi MAX Black 7oz		1,204.30	1,374.14	1,482.21
CO-TTST	Two-tone Stealth Coat, Base Color and Black Undersleeves				109.44
Aluminized Proximity Outer Shells					
Code	Material	A10 (ATC)	B1 (BAC)		
14	Aluminized Para-aramid (1088)	935.11	953.97		
17	Aluminized PBI (1098)	1,038.35	1,060.17		
Coat Liner - Stedair 3000 on Nomex E-89					
Code	Material	A10 (LOA32)	B1 (LOB32)	B2 (LBP32)	Stealth (LST32)
97	Q-8 Nomex Quilt	515.30	534.60	540.38	
98	Defender M NP Brass	583.81	563.55	568.38	613.73
96	Omni Synergy SL2			651.36	673.55
91	Defender® M SL2 Camo	659.07	606.01	648.48	681.28
94	Caldura Elite SL2		731.45	740.13	761.36
90	Titanium Blue		731.45	740.13	761.36
99	Quantum® 3D SL2			798.03	822.17
93	Prism Pure NP		564.51	569.34	617.59
95	Glide Ice SL2		733.38	741.10	764.25
Coat Liner - Stedair 4000 on Nomex PJ					
Code	Material	A10 (LOA32)	B1 (LOB32)	B2 (LBP32)	Stealth (LST32)
48	Defender M NP Brass			706.37	725.66
46	Omni Synergy SL2			767.15	785.49
41	Defender® M SL2 Camo			777.78	799.00
44	Caldura Elite SL2			854.97	880.06
40	Titanium Blue			854.97	880.06
49	Quantum® 3D SL2			914.80	941.83
43	Prism Pure NP			710.23	727.59
45	Glide Ice SL2			856.89	881.99

Coat Options

Closures & Coat Lengths		
Code	Description	Price
CO-C1	Chicago - H&D In / Velcro on Flap	32.58
CO-EXTG3	Extend Shell Length 3"	72.70
CO-LEXTG3	Extend Liner Length 3"	41.84
CO-EXTG5	Extend Shell Length 5"	154.21
CO-LEXTG5	Extend Liner Length 5"	110.78
CO-GUS	Shell Expansion Gusset at Hem Side Seams	23.92
CO-LGUS	Liner Expansion Gusset at Hem Side Seams	24.81
CO-BC	Shell Full Cut	122.60
CO-LBC	Liner Full Cut	124.45
Trim, Lettering and Patches		
Code	Description	Price
CO-SEGLS3	3M Segmented Trim Lime/Yellow	37.17
CO-SEGRS3	3M Segmented Trim Red/Orange	37.17
CO-HV	High Visibility Trim	71.66
CO-PF	Project Fires Trim (with Yoke Reinforcement)	86.09
CO-RP	LazerMax Cording on Coat (for A10 & B1)	42.96
CO-26	Scotchlite Letters (2" & 3" L/Y, R/O)	0.00
CO-26-4	4" Scotchlite letters	0.00
CO-26-6	6" Scotchlite letters	0.00
CO-26-8	8" Scotchlite letters	0.00
CO-LPS	Sewn-on Name Patch (5x16) (5x19)	25.22
CO-2LS	Two Line Sew-On Letter Patch	32.42
CO-DS	Direct Sew for Lettering - Price is per location / in place of a plaque	0.00
CO-LPV	Velcro Name Plaque (5x16) (5x19)	62.41
CO-2LV	Two Line Velcro Letter Patch	70.55
CO-LPH	Hanging Name Plaque with Snaps and Velcro	60.29
CO-STLPV	Stealth Velcro "Tail" Letter Patch	62.43
CO-NPS	Sew-On Number Patch	14.30
CO-NPV	Velcro Number Patch	28.86
CO-AP	Arched Letter Patch - sewn on	47.88
CO-VOC	Velcro on Coat to receive Name Plaque	14.40
CO-VOCs	Hanging Letter Patch Velcro Snaps on coat to receive name plaque	16.53
CO-USAFGL	American Flag Embroidered NOMEX Left Sleeve	29.91
CO-USAFGLR	American Flag Embroidered NOMEX Right Sleeve	29.91
CO-CANFLG	Canadian Flag Embroidered NOMEX	29.91
OP-EMBPATCH	Embroidery Patch	31.50
Wristers		
Code	Description	Price
CO-20NK7	7" NOMEX/KEVLAR Blend Wristers with Thumbhole	22.50
CO-22	4" NOMEX/KEVLAR Wristers	0.00
CO-ESW	Elasticized Sleeve well with 7" Nomex Thumbhole Wristers attached to liner sleeve	14.67
CO-20TL	Black Nomex Twill Thumb Loops	15.51
Pockets		
Code	Description	Price
CO-12-10x2	2x10x10 Bellows Pockets Lined with Kevlar	160.56
CO-12-2x6x8	2x6x8 Bellows Pockets lined with Kevlar Twill	129.68

Pockets (continued)		
Code	Description	Price
CO-HWQ8	Lined Handwarmer Pockets-Q8	18.76
CO-6D	Pocket Divider	15.29
CO-12F	Split Pocket Flap	13.51
CO-FPTP	Internal Divided 6-Pak Tool Pocket of Kevlar Twill	18.49
CO-RPL	Radio Pocket 9x3.5x2	52.76
CO-RPM	Radio Pocket 8x3.5x2	52.76
CO-RPS	Radio Pocket 7x3.5x2	52.76
CO-09L	Flashlight Pocket 9x3.5x2	39.85
CO-09S	Flashlight Pocket 7x3.5x2	39.85
CO-13	Air Mask Pouch - Detachable	95.69
CO-23	Extra Liner Pocket	27.15
CO-UPKT	Cellphone/Utility Pocket	36.84
CO-PENSLOT	Pencil Slot in Liner Pocket	2.90
Snaps and Straps		
Code	Description	Price
CO-24	Self Mic Strap	8.25
CO-25	Self Pass Strap	14.32
CO-10	Flashlight Strap	14.03
CO-10FS	Flashlight Snap on Material Tab	10.64
CO-10SS	Flashlight Snap & Strap	21.49
CO-UFH	Universal Flashlight Holder	31.73
CO-30	3-Rivet Snap Hook Attached Vertically	17.50
CO-31	Dee-Ring	14.46
CO-44	Snap Tabs to secure jacket liner to shell	14.57
OP-NOL	Name on Label	1.93
Reinforcements - Cuffs		
Code	Description	Price
CO-1	Self Material	26.29
Reinforcements - Elbows		
Code	Description	Price
CO-15	Self Material	27.20
CO-15A	Stedshield Elbows	24.57
CO-15P	Padded Elbows - 2 Layers Q8 Under Reinforcement	31.63
CO-15PL	Padded Elbows - 1 Layer Q8 on Liner	15.65
Reinforcements - Shoulders		
Code	Description	Price
CO-16	Self Material	37.63
CO-16A	Stedshield Shoulders	22.90
CO-16P	Padded Shoulders - 2 Layers Q8 Under Reinforcement	21.17
CO-28S	Self Material Upper Back	35.90
CO-28T	Extra Layer of Thermal on Liner Upper Back (A10, B1)	19.90
CO-28TP	Extra Layer of Thermal on Liner Upper Back (B2, ST)	19.90
Reinforcements - Pockets		
Code	Description	Price
CO-21STED	Stedshield-outside (replaces Kevlar Twill inside)	33.75
CO-45F-SB	KEVLAR Twill Pouch - Fully Lined Inside	23.37
OP-REFMPF	Pocket Flap StedShield Reinforced with Foam	50.81

Turnout Pant Price List

Pant Outer Shells						
Code	Material	A10 (AT33)	B1 (BA33)	B2 (BP33)	Stealth (ST33)	SH Stealth (SH33) Internal Harness*
02	Nomex® 7.5oz	548.11	619.52	737.25	756.55	
07	Pioneer 6.6oz	602.44	680.32	800.93	825.06	1,441.68
08	Agility 6.6oz		866.55	937.97	970.77	1,581.59
20G	Flex 7 Gold 6.9oz		1,032.53	1,047.97	1,090.44	1,706.08
20B	Flex 7 Black 6.9oz		1,032.53	1,047.97	1,090.44	1,706.08
04	Armor AP 6.5oz		689.96	808.65	831.81	1,444.57
23G	Pbi MAX Gold 7oz		1,028.66	1,040.25	1,086.57	1,698.35
23B	Pbi MAX Black 7oz		1,028.66	1,040.25	1,086.57	1,698.35
PO-TTST	Two-Tone Stealth Pant, Base Color with Black Lower Leg Panel				69.26	
PO-RITC2	RIT Class II Kavlar Internal Harness. *Note: Harness Pant includes NFPA RIT Class II Black Kevlar Harness					
Proximity Outer Shells						
Code	Material	A10 (ATP)	B1 (BAP)			
14	Aluminized Para-aramid (1088)	679.98	782.23			
17	Aluminized PBI (1098)	754.44	870.59			
Pant Liner - Stedair 3000 on Nomex E-89						
Code	Material	A10 (LOA33)	B1 (LOB33)	B2 (LBP33)	Stealth (LST33)	SH Stealth (LSH33) Internal Harness
97	Q-8 Nomex Quilt	384.07	393.71	420.72		
98	Defender M NP Brass	461.27	465.12	490.20	500.83	
96	Omni Synergy SL2			540.38	545.21	
91	Defender® M Camo SL2	519.16	521.08	529.78	535.56	576.09
94	Caldura Elite SL2		574.17	593.46	627.23	646.55
90	Titanium Blue		574.17	593.46	627.23	646.55
99	Quantum® 3D SL2			669.70	678.38	
93	Prism Pure NP		468.01	494.07	503.72	520.13
95	Glide Ice SL2		577.06	596.36	629.16	648.48
Pant Liner - Stedair 4000 on Nomex PJ						
Code	Material	A10 (LOA33)	B1 (LOB33)	B2 (LBP33)	Stealth (LST33)	SH Stealth (LSH33) Internal Harness
48	Defender M NP Brass			568.38	585.74	
46	Omni Synergy SL2			623.37	634.96	
41	Defender® M SL2 Camo			613.73	627.23	670.66
44	Caldura Elite SL2			650.39	716.98	741.10
40	Titanium Blue			650.39	716.98	741.10
49	Quantum® 3D SL2			716.03	768.12	
43	Prism Pure NP			571.27	587.67	607.94
45	Glide Ice SL2			646.55	717.95	732.42

SCX Pant Options

Closures		
Code	Description	Price
PO-P1	Zipper / Velcro	25.13
PO-12	Harness Loops	47.49
Trim		
Code	Description	Price
PO-SEGLS3	3M Segmented Trim Lime/Yellow	16.98
PO-SEGRS3	3M Segmented Trim Red/Orange	16.98
PO-VL	Vertical Trim down side of leg - Attack or Battalion	52.63
PO-VLL	Stealth Vertical Lower Leg Trim	28.04
PO-RPOS	LazerMax Scotchlite Reflective Cording (A10, B1)	36.34
Pockets		
Code	Description	Price
PO-3K	2x10x10 Bellows Pockets Lined with Kevlar	122.16
PO-6D	Pocket Divider (1)	15.36
PO-12F	Split Pocket Flap	13.64
PO-11P	Rear Hip Patch Pocket with Flap	27.71
PO-11UP	Angled Top Lower Leg Pocket	27.70
PO-FPTP	2-Pak Internal Tool Pocket of Kevlar Twill	13.51
PO-6TP	6-Pak Internal Tool Pocket - Self Material	68.57
PO-VP	Vertical Trim on Pant Pockets	27.22
PO-3SPFK	Harness Pkt w/Divided Flap, Split Pkt and 2 Inside Straps	123.09
Reinforcements - Cuffs		
Code	Description	Price
PO-1	Self Material	31.59
Reinforcements - Knees		
Code	Description	Price
PO-2S	Self Material	31.66
PO-FMKP	Foam Knee Pad A10, B1, B2	43.43
PO-FMKPST	Foam Knee Pad Stealth	48.26
PO-27S	Extra Layer of Padding on Shell	19.12
PO-27T	Extra Layer of Thermal on Liner	17.87
Removable Knees (available on A10 and B1 only)		
Code	Description	Price
PO-27	Removable Self Knee with Self Material Frame	93.23
PO-27A	Removable Arashield Knee with Self-Material Frame	96.44

Reinforcements -Pockets		
Code	Description	Price
PO-21STED	Stedshield-outside (replaces Kevlar Twill inside)	35.47
PO-14K	2X10X10 Half bellows pocket Lined Kevlar	137.19
PO-45F	KEVLAR Twill Pouch - Fully Lined Inside	25.59
Misc		
Code	Description	Price
KEVBLT	2" Black KEVLAR Belt	36.83
RITRB	RIT Rescue Belt	332.39
PO-BLHG	Belt Loops and Handle Grips	44.32
PO-13	Self Material Postman Style take up straps	19.58
PO-20	Pass Strap for Pants	14.32
OP-NOL	Name on Pant Label	1.93

Turnout Gear Accessories

Suspenders		
Code	Description	Price
135R	Black Ops Suspenders	52.76
135S	Black Ops Suspenders - Short	49.22
135X	Black Ops Suspenders - XL	54.53
Knit Hoods		
Code	Description	Price
119NM	6 oz NOMEX Knit Hood (NFPA)	67.57
Gear Bags		
Code	Description	Price
PKGC15	Red Cordura Gear Bag with Shoulder Strap	76.53

Dual Cert / Wildland / Extrication Gear Price List

Dual Certified Gear - 6.5oz. Defender M Gold Rip-Stop					
Code	Description		SM - 2X	3X - 5X	6X +
DCCTD21	Coat		405.29	463.19	509.51
DCPTD21	Pant		416.87	476.70	523.98
DCCVD21	Coverall		654.27	748.83	823.13
Wildland - 6oz. NOMEX					
Code	Description	Color	SM - 2X	3X - 5X	6X +
WLSCTN26	Coat	Yellow (26)	323.07	368.62	398.54
WLSPTN26	Pant	Yellow (26)	269.23	312.66	343.54
WLPTN19	Pant - Spruce, No Trim	Spruce (19)	272.13	316.52	345.47
WLSHN26	Shirt	Yellow (26)	205.54	243.18	267.30
Special Order Colors: Tan/Khaki (20)					
Wildland - 6oz. NOMEX					
Code	Description	Color	SM - 2X	3X - 5X	6X +
WLVPN19	Vented Pant - Limited stock	Spruce (19)	287.56	328.09	343.54
WLSCVN26	Coverall	Yellow (26)	525.91	604.08	661.97
Wildland - 9oz. INDURA FR Cotton					
Code	Description	Color	SM - 2X	3X - 5X	6X+
WLSCTI26	Coat	Yellow (26)	253.79	295.28	318.44
WLSPTI26	Pant	Yellow (26)	228.22	260.54	286.60
Wildland - 9oz. INDURA FR Cotton					
Code	Description	Color	SM - 2X	3X - 5X	6X +
WLPTI19	Pant - Spruce, No Trim	Spruce (19)	230.63	262.47	276.95
WLSCVI26	Coverall	Yellow (26)	374.41	429.42	471.88
Wildland - 7oz. TECASAFE PLUS					
Code	Description	Color	SM - 2X	3X - 5X	6X +
WLSCTTS26	Coat	Yellow (26)	273.09	322.30	354.53
WLSPTTS26	Pant	Yellow (26)	239.32	270.20	297.21
WLSHTS26	Shirt	Yellow (26)	172.74	179.49	196.85
WLSCVTS26	Coverall	Yellow (26)	415.92	490.20	538.46
Extrication Gear - 7oz. 100% FR Cotton					
Code	Description		SM - 2X	3X - 5X	6X +
EXCT	Coat		208.44	238.35	262.47
EXPT	Pant		233.52	266.33	293.35
EXCV	Coverall		375.38	428.45	471.90
Colors Available: Navy (13), Tan/Khaki (20),Red(16)					

Utility Pants

Utility Pant - 6oz. Navy NOMEX with 2" L/Y Triple Trim			
Code	Description	SM - 2X	3X - 5X
EMSPTN13	6oz Navy Nomex Utility (aka EMS) pant Includes Padded Stedshield Knees and L/Y Triple Trim	317.98	374.77

Dual Cert / Wildland / Extrication Options

Closures		
Code	Description	Price
CO-26	Scotchlite Letters (2" & 3" L/Y, R/O)	0.00
CO-19UD	Sewn-on Name Patch (5x16) (5x19)	26.63
CO-40UDE	Two Line Sew-On Letter Patch	33.03
CO-19UV	Velcro Name Plaque (5x16) (5x19)	33.56
CO-40UV	Two Line Velcro Letter Patch	37.70
CO-NPS	Sew-On Number Patch	14.30
CO-NPV	Velcro Number Patch	28.86
CO-USAFGL	American Flag Embroidered NOMEX Left Sleeve	29.91
CO-USAFGLR	American Flag Embroidered NOMEX Right Sleeve	29.91
CO-EXTG3	Add 3" to Coat Length	72.70
CO-16	Self-Material Reinforced Shoulders	37.63
OP80	Self-Material Reinforced Elbows	11.37
OP81	Self-Material Reinforced Seat	26.85
OP90	Self Material Reinforced Knees	23.48
OP90-PKP	WL & DC Pant Padded Knees - 2 Layers Q8	27.89
OP90-CKP	WL & DC Coverall Padded Knees - 2 Layers Q8	29.76
OP-100-18	18" Heavy Duty Brass Leg Zippers	48.28
OPNYLSL-SEG	NYC Style Lime/Yellow Segmented Triple Trim - Coat	40.53
OP10-SEG	Trim Lime/ Yellow Segmented Triple Trim - Pant	40.53
OPNYRSR-SEG	NYC Style Red/Orange Segmented Triple Trim	40.53
OP10	2' Triple trim Pant cuff	25.01
OP20	2' Triple trim Coat cuff	25.01
OP30	2" Triple trim Coat Hem	30.54
OP31	2" Triple trim Coat Across Shoulders	16.66
OP10-SEGR	Pant cuff Segmented trim RSR	40.53
OP20-SEG	Coat sleeve cuff Segmented RSR	15.26
OP30-SEG	Coat Hem Segmented RSR	15.26
OP31-SEG	Across the Shoulders Segmented RSR	15.78
OP41-SEGR	Coverall Sleeve Leg Cuff Upper Back	46.73
OPNYLSL-SEG	NYC Trim Addition of upper arms + full Chest and Back circumference L/Y Triple Trim	40.53
OPNYRSR-SEG	NYC Trim Addition of upper arms + Full Chest and Back circumference RSR triple trim	40.53
OP-60	Additional Radio Pocket	28.02
OP95 EMS	EMS Black Arashield PADDED KNEES 2 LAYERS Q8	61.66
OP-VO	Velcro to Accept Patch	15.29
KEVBLT	Black 2-Inch Wide KEVLAR Belt	36.83
135R	Black-Ops Suspenders	52.76



There is a separate Pant Worksheet (Page 9) and Size Form (Page 10).

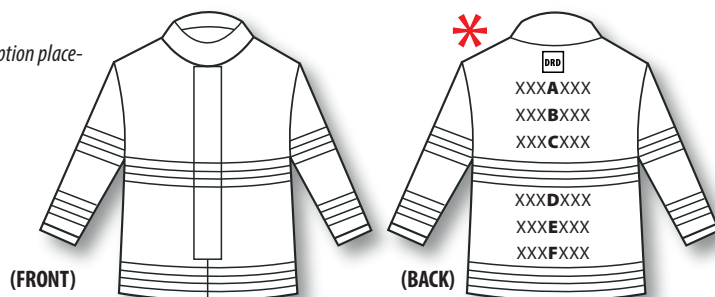
1. Select a Coat Style
2. Select an outer shell and Color
3. Select a Liner System
4. List any Extra Options or Instructions
5. Use Sizing Form to list Sizes and Names

1	COAT STYLE	 A10 Attack (AT32)	 B1 Battalion (BA32)	 B2 Battalion (BP32)	 Stealth (ST32)
---	------------	---	---	---	--

	CODE	OUTER SHELL and LINER SYSTEM	LIST PRICE
2		OUTER SHELL:	
3		LINER SYSTEM:	
			SUBTOTAL

[illegible]

SUBTOTAL	
LL EXPRESS +20%	
LESS DISCOUNT	
TOTAL	



* CO-26 Lettering is \$8 per letter.
Please choose row(s) from the diagram
at left.



Lakeland®
Protect Your People

PANT WORKSHEET

Dealer Information:

INSTRUCTIONS:

Use this form to build and/or order a Turnout Pant.

Follow Steps 1-5 and include CODES when/if possible.

Use LIST PRICE column to add and total prices.

There is a separate Coat Worksheet (Page 8) and Size Form (Page 10).

STEPS

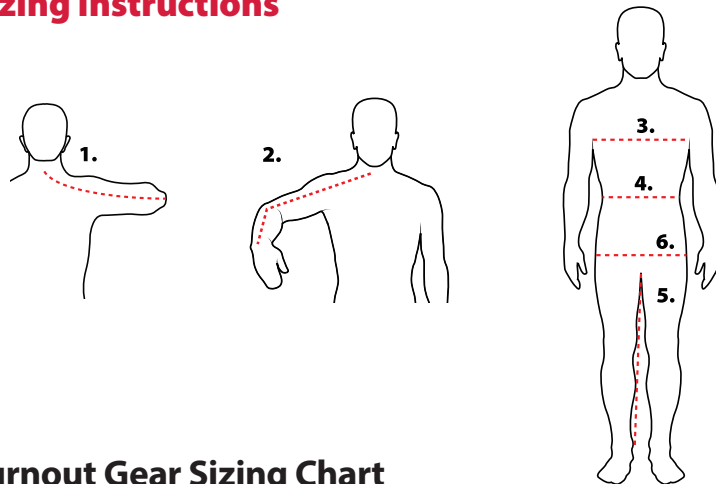
- 1. Select a Pant Style**
- 2. Select an outer shell and Color**
- 3. Select a Liner System**
- 4. List any Extra Options or Instructions**
- 5. Use Sizing Form to list Sizes and Names**

[illegible]

STEP 5 SIZING FORM

**FIRE DEPARTMENT:****DISTRIBUTOR NAME:**[illegible]

Sizing Instructions



1/2. Sleeve: Sleeve lengths are graded to chest size so there is no need to measure, but for unusually long or short arms measure sleeve by holding arm out and forward as shown.

- Begin tape measure at nape of neck and...
- Follow the outside contour of arm around elbow and measure to fatty part of palm.

3. Chest: Have Firefighter inhale and hold breath while you measure around the fullest part of the chest, keeping tape under arms and around shoulder blades.

4. Waist: Measure around the waist. Place the Tape Measure as close to the body as possible. There is some oversize built into the pant waist to provide extra room to fit over clothing.

5. Hips (Women only): 6. Measure around fullest part of hips.

6. Inseam: Wearing normal station wear, measure from crotch inner seam to ankle bone or desired length.

Turnout Gear Sizing Chart

Numeric sizing in 2" increments for chest, waist and inseams.
Special sleeve lengths are available in 1" increments.

Coat

	SM		M		L		XL		2X		3X		4X	
CHEST	34	36	38	40	42	44	46	48	50	52	54	56	58	60
SLEEVE	32.5"	33.25"	33.75"	34.5"	35"	35.75"	36.5"	37.25"	38"	38.75"	39.5"	40.25"	41"	41.75"

Pants

	SM		M		L		XL		2X		3X		4X	
WAIST	30	32	34	36	38	40	42	44	46	48	50	52	54	56

Wildland, Dual Certified, & Extrication Gear Sizing Chart

Numeric sizing in 2" increments for chest, waist and inseams.
Special sleeve lengths are available in 2" increments.

Coat

	S	M	L	XL	2XL	3XL	4XL	5XL	6XL
CHEST	36-38	40-42	44-46	48-50	52-54	56-58	60-62	64-66	68-70
SLEEVE	34	35	36	37	38	39	40	41	42

Pants

	S	M	L	XL	2XL	3XL	4XL	5XL	6XL
WAIST	26-28	30-32	34-36	38-40	42-44	46-48	50-52	54-56	58-60

Coveralls

	SM		M		L		XL		2X		3X		4X		5X		6X	
CHEST	36-38		40-42		44-46		48-50		52-54		56-58		60-62		64-66		68-70	
	Sleeve	Inseam	Sleeve	Inseam	Sleeve	Inseam	Sleeve	Inseam	Sleeve	Inseam	Sleeve	Inseam	Sleeve	Inseam	Sleeve	Inseam	Sleeve	Inseam
X-Short	30	26	31	26	32	26	33	26	34	26	35	26	36	26	37	26	38	26
Short	32	28	33	28	34	28	35	28	36	28	37	28	38	28	39	28	40	28
Regular	34	30	35	30	36	30	37	30	38	30	39	30	40	30	41	30	42	30
Tall	36	32	37	32	38	32	39	32	40	32	41	32	42	32	43	32	44	32
X-Tall	38	34	39	34	40	34	41	34	42	34	43	34	44	34	45	34	46	34

X-Short Coveralls: Subtract 4" from standard sleeve and inseam lengths and 1" from torso

Short Coveralls: Subtract 2" from standard sleeve and inseam lengths and 1" from torso

Tall Coveralls: Add 2" to standard sleeve and inseam lengths and 1" to torso

X-Tall Coveralls: Add 4" to standard sleeve and inseam lengths and 1" to torso

If chest measurement falls between sizes, go up to next larger size

Codes

There are two different codes used to determine a set of gear.
The Outer Shell code and Liner System code. Both codes also designate style or model garment.

OUTER SHELL

A10

AT32 = Attack Coat

AT33 = Attack Pant

B2

BP32 = Battalion Pleated Coat (B2)

BP33 = Battalion Pleated Coat (B2)

B1

BA32 = Battalion Coat

BA33 = Battalion Pant

STEALTH

ST32 = Stealth Coat

ST33 = Stealth Pant

Outer Shell codes consist of: Style, Shell Material, Color and Size.

Example: **BA3202Y/48** = Battalion Coat, NOMEX, Yellow, Size

BA3202Y/48 - BAC = Battalion Coat

BA3202Y/48 - 02 = NOMEX

BA3202Y/48 - Y = Yellow

BA3202Y/48 - 48 = Size

LINER SYSTEM

A10

LOA32 = Liner Attack Coat

LOA33 = Liner Attack Pant

B2

LBP32 = Liner B2 Coat

LBP33 = Liner B2 Pant

B1

LOB32 = Liner Battalion Coat

LOB33 = Liner Battalion Pant

STEALTH

LST32 = Liner Stealth Coat

LST33 = Liner Stealth Pant

Liner codes consist of: Style, Moisture Barrier, Thermal Liner and Size.

Example: **LOB3298/48** = Battalion Coat, Stedair 3000, Aralite, Size

LOB32982/48 - LOBC = Liner Option Battalion Coat

LOB3298/48 - 9 = Stedair 3000

LOB3298/48 - 8 = Defender® M Brass

LOB3298/48 - 48 = Size

Terms and Conditions

Return Goods Policy

No Returns will be accepted without a pre-approved written authorization. MTS, SCX and OSX gear that has been altered in any way cannot be returned. Unaltered OSX, other stock type gear or accessory in NEW condition returned within 30 days are subject to a 5% Re-Stocking Fee. After 30 days there will be a 20% Re-Stocking Fee. Not Returnable after 60 days. All returns must be shipped Freight Pre-Paid. Custom, made-to-order items are not returnable.

Warranty

The following is made in lieu of all warranties expressed or implied including without limitation implied warranties of merchantability or fitness for a particular purpose: Seller's only obligation shall be to replace such products proved to be defective because of workmanship. This warranty does not extend to raw materials and components supplied to Lakeland or any of its subsidiaries or divisions by third parties. Seller shall not be liable for any injury, loss or damage, direct or consequential, arising out of the use of or inability to use the product. Before using, the end user shall determine the suitability of the product for his/her intended use and user assumes all risk and liability whatsoever in connection therewith. Safety and permeation data for Lakeland protective clothing is available upon request. As in almost all instances, we do not know and cannot contact end users of our products. It is incumbent upon safety distributors to distribute to the end users both Lakeland's and the fabric manufacturer's safety and use information as updated. Such data does not attempt to address all the safety issues associated with protective garments. Improper use of these garments may result in personal injury or death. Improper use includes, but is not limited to, improper selection, use without adequate training, disregard of any warnings and instructions supplied by the fabric manufacturer and failure to maintain and inspect the garment. Lakeland and its divisions' protective garments are intended to be used only in conjunction with an organized safety protection program; THE ENVIRONMENTAL PROTECTION AGENCY (EPA) and the requirements of OSHA Safety and Health Standard 29 CFR 1910 and OSHA regulations Section 1910 et seq. available from the US Department of Labor, Occupational Safety and Health Administration; or other pertinent national recognized standards, such as those promulgated by the National Fire Protection Association (NFPA), The American Society for Testing and Materials (ASTM), and the U.S. Coast Guard or the Department of Defense. The foregoing may not be changed except by the agreement signed by an officer of the seller. IN ALL EVENTS, WE MAKE NO WARRANTY OF ANY KIND WHATSOEVER, EXPRESS OR IMPLIED, AND ALL IMPLIED WARRANTIES OF MERCHANTABILITY AND FITNESS FOR A PARTICULAR PURPOSE ARE HEREBY DISCLAIMED BY US AND EXCLUDED FROM ANY CONTRACT.

Restocking Fee

All returns are subject to a 5% restocking fee if returned within 30 days. All returns are subject to a 20% restocking fee if returned between 30-60 days.

All Warranty and Return matters should be sent to your Customer Service Representative who will work with the Fire Sales Team to determine the best solution.

Samples, Wear Tests, and Sizing Sets

All sample request must be pre-approved by the National Fire Sales Manager. If approved, a Dealer PO must be provided and the item will be invoiced at FULL LIST price. The sample must be returned within 30 days and be in like-new condition for full credit. Samples returned in other than new/same condition will be considered "un-sellable" and returned to the dealer and invoiced at regular price. Wear Test Samples must be pre-approved by the Fire Territory Sales Manager, in conjunction with the Fire National Sales Manager. Terms can be negotiated on a case-by-case basis.

Sizing sets can be ordered on a first come, first serve basis. A Dealer PO must be submitted to reserve/receive a sizing set. The PO will be a \$0 PO. Sizing sets not returned within 30 days will be invoiced at the full amount. Amounts will vary based on the style of the sizing set. Sizing sets are shipped out with freight pre-paid by Lakeland Industries. Return shipping is to be paid by the customer.

****SPECIAL NOTE****

Any changes to orders must be made within 24 hours of order acknowledgment.

LAKELAND INDUSTRIES RESERVES THE RIGHT TO MAKE CHANGES AS NEEDED OR REQUIRED.

